



# City of San Leandro

Meeting Date: October 5, 2020

## Presentation

---

**File Number:** 20-363

**Agenda Section:** PRESENTATIONS

**Agenda Number:** 4.A.

**TO:** City Council

**FROM:** Jeff Kay  
City Manager

**BY:** Debbie Pollart  
Public Works Director

**FINANCE REVIEW:** Not Applicable

**TITLE:** Presentation of Draft Strategies for City of San Leandro Climate Action Plan Update

---

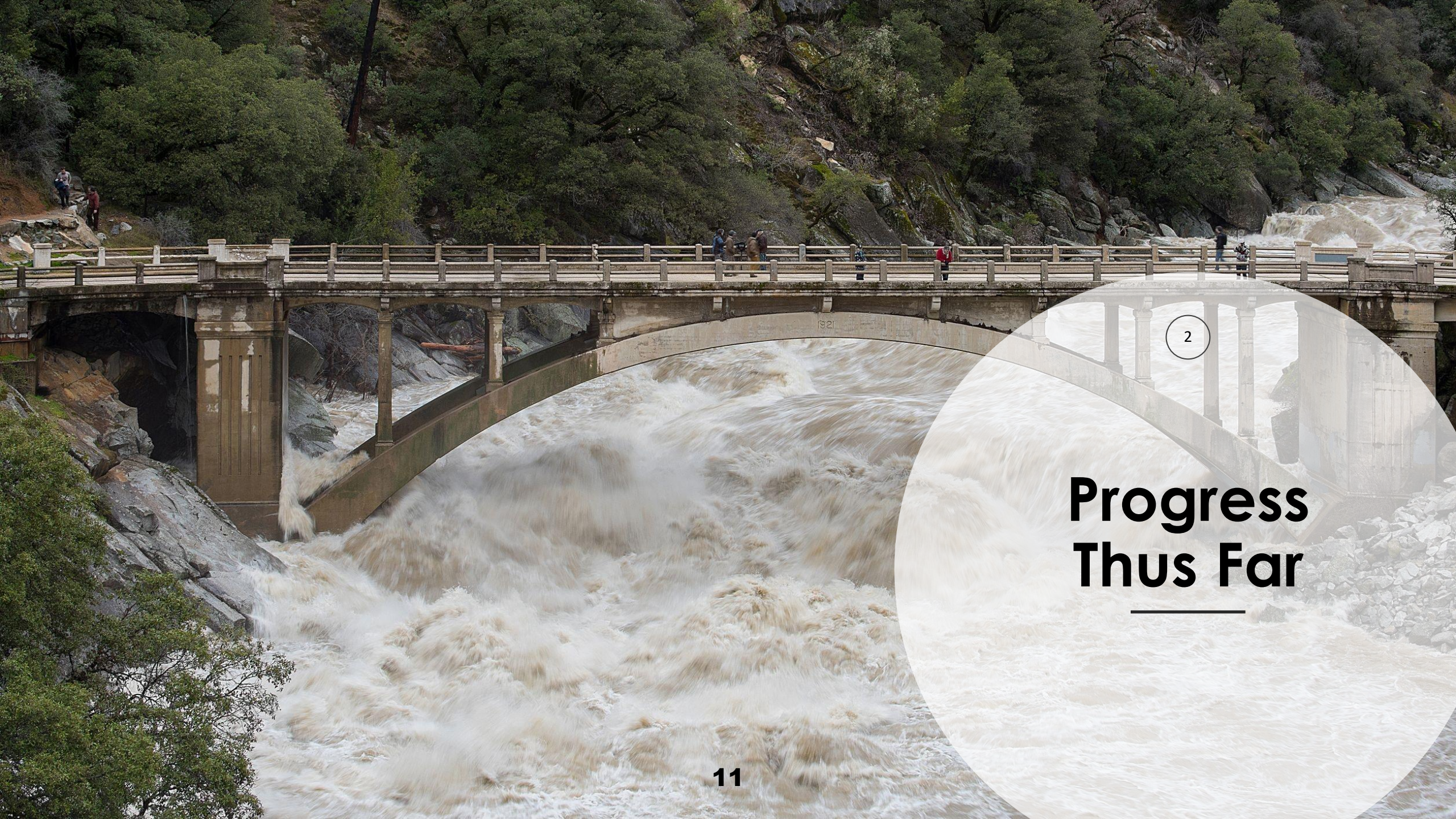


SAN LEANDRO

# Climate Action Plan (CAP) Update

City of San Leandro

October 5, 2020



2

# Progress Thus Far

---

# What's Been Done?

## Work Products

- Final GHG inventories and forecast
- Final Vulnerability Assessment
- Reductions from existing activities

## Community Outreach

- Community education
- Individual and small group meetings
- Climate board games
- Online engagement survey
- Community workshop

# Recap: Work Products

---

# What We Learned: GHG Inventories



Community members are using less energy



Electricity sources and vehicles are cleaner



Less waste generation



Less water use

| Sector               | 2005           | 2017           | Change      |
|----------------------|----------------|----------------|-------------|
| Energy               | 284,410        | 161,930        | <b>-43%</b> |
| Transportation       | 363,550        | 344,290        | <b>-5%</b>  |
| BART                 | 2,910          | 3,710          | <b>27%</b>  |
| Off-road             | 23,190         | 26,970         | <b>16%</b>  |
| Waste                | 46,910         | 34,860         | <b>-26%</b> |
| Water and wastewater | -              | 1,540          | -           |
| <b>Total</b>         | <b>720,990</b> | <b>573,300</b> | <b>-20%</b> |

## Existing and Planned Accomplishments

San Leandro's existing and planned regional and local efforts are expected to reduce community-wide emissions **18% below 2017 levels by 2050**, in combination with State activities.

|   | 2017 MTCO <sub>2</sub> E | 2030 MTCO <sub>2</sub> E | 2050 MTCO <sub>2</sub> E |
|---|--------------------------|--------------------------|--------------------------|
| <b>Baseline (2005) emissions</b>                                  | <b>720,990</b>           | <b>720,990</b>           | <b>720,990</b>           |
| <b>Forecasted emissions</b>                                       | <b>573,580</b>           | <b>659,100</b>           | <b>692,850</b>           |
| State reductions  | -                        | -122,580                 | -218,490                 |
| East Bay Community Energy   | -                        | -35,040                  | -0                       |
| Municipal energy efficiency retrofits                             | -                        | -30                      | -0                       |
| Streetlight LED retrofits   | -                        | -10                      | -0                       |
| Renewable energy installations                                    | -                        | -20                      | -0                       |
| Renewable diesel in City fleet                                    | -                        | -10                      | -10                      |
| BART shuttles   | -                        | -10                      | -10                      |
| Clean BART electricity  | -                        | -3,650                   | -4,550                   |
| <b>Reductions from all existing actions</b>                       | <b>-</b>                 | <b>-161,350</b>          | <b>-223,060</b>          |
| <b>Target emissions</b>   |                          | <b>432,590</b>           | <b>144,200</b>           |
| <b>Forecasted emissions with all existing and planned actions</b> | <b>15</b>                | <b>573,580</b>           | <b>469,780</b>           |

## What We Learned: Vulnerability Assessment

Flooding

Drought

Extreme  
heat

Human  
health  
hazards

Severe  
storms

Sea level  
rise

- Bayshore flooding creates higher vulnerabilities than any other hazard.
- Households in poverty are more vulnerable to hazards.
- Illness and evacuation concerns for seniors and persons with disabilities.
- Residential development vulnerable to several hazards.
- Infrastructure at risk of damage by extreme heat, landslides, severe storms, and wildfires.
- Flooding and sea level rise pose threat to buildings and public facilities.
- Herbaceous vegetation ecosystems at risk.
- Water and wastewater and energy delivery services are the most vulnerable community services.





8

# Recap: Community Input

---

# February 20<sup>th</sup> Community Workshop

Background of CAP work and next steps

Discussed results of GHG Inventories and  
Vulnerability Assessment

Small group exercise

# Sample Feedback from Small Group Exercise

## **Energy**

Increase efficiency of materials, equipment, and appliances

Push for renewable energy

Green businesses and homes

## **Transportation**

Support carpooling, public transit, and active transportation

Shift to electric vehicles

## **Waste**

Compost and recycling programs

Greywater programs citywide

## **Climate Hazards**

Residents learn fire safety

Tree planting to reduce extreme heat

# Online Survey Results

**Community members provide direct feedback on climate and adaptation topics they feel are important in San Leandro.**

High priorities include:

- Energy efficiency and switch to renewables
- Reducing, reusing, and recycling
- Conservation of all resources
- Community preparation and response to hazardous conditions
- Protect essential infrastructure and services
- Support vulnerable populations
- Reduce auto dependency and energy efficiency



Wednesdays  
4pm - 8pm  
FARMERS  
MARKET

CHASE

# Where We Are Now

---

# Seeking Public Input



Goals

Policies

Implementation

# Integrating equity



## Equity

Just and fair inclusion in a society in which all can participate, prosper, and reach their full potential.

- Equity is central to the just transition to a regenerative economy where peoples' well-being and livelihoods are assured.
- Equitable climate action must address systemic issues such as racism and prioritize people of color and low-income communities impacted first and worst by climate change.
- This requires a deep and broad input process from all communities, particularly those who have not been traditional included or heard before.



# GHG and Climate Adaptation Policies

## Policies are formed by...

- City staff comments
- Incorporating community input
- Local and regional best practices
- Known successes
- Community input regarding equity

## The policies will...

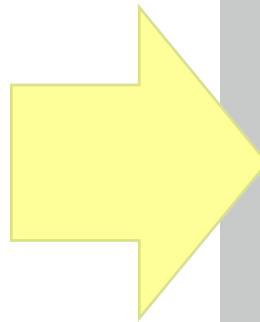
- Address gaps in existing measures
- Include new technology, best practices and science
- Ensure targets are achieved
- Explore opportunities for co-benefits
- Address equity concerns



# What are Co-benefits?

Policies which provide positive impacts beyond the intended purpose

Positive impacts should align with community priorities such as



Local job creation

Equity

Neighborhood resilience

Green space

Cost savings

Resource conservation

Active mobility and access to transit

Improved road safety

Increased community wealth

Food Security

Reduced air pollution

Increased civic engagement



# Categories of Draft GHG Reduction Goals

---

- New building energy efficiency and fuel switching
- New building energy efficiency and energy cost reduction
- New building energy efficiency and switch to renewable sources
- Increase renewable energy use in buildings
- Increase transit-oriented development
- Decrease reliance on the automobile
- Switch in automobile fuels
- Sustainable solid waste practices
- Reduce and reuse programs
- Efficiency in water consumption
- Carbon-free economy

## Draft Policy Example

Work with transit agencies to improve performance and quality of public transit



Responsible Party: Engineering and Transportation Division



Partners: AC Transit and BART



Cost: Medium



Indicator: Number of passengers



Timeframe: Continuing/immediate



# Categories of Draft Climate Adaptation Goals

---

- Prepare community for emergency response
- Protect vulnerable groups from disasters
- Increase building resiliency
- Increase infrastructure resiliency
- Increase reliability of essential services
- Increase resiliency of existing habitats
- Utilize the Climate Action Plan

## Draft Policy Example

Prepare a plan to provide essential services during power outages and in times of emergency



Responsible Party: Police (Emergency Services); Public Works; Recreation and Human Services



Partners: SLHS Social Justice Academy; the San Leandro 2050; Utilities (EBCE, PG&E)



Cost: Medium- funded by the General Fund and grant programs



Indicator: Number of designated resilience hubs



Timeframe: Medium

<https://sanleandroclimateaction.consider.it/?tab=Goals>

Vote on draft  
goals and  
policies



## Next steps

- Finalize GHG reduction and climate adaptation policies.
- Prepare implementation program and updated CAP document.
- Public review.
- CAP adoption.



**Questions?**

---



# Contact

- For questions about the workshop or the CAP in general, contact Dr. Hoi-Fei Mok, Sustainability Manager:
- [SustainableSL@sanleandro.org](mailto:SustainableSL@sanleandro.org)
- (510) 577-3421
- <https://www.sanleandro.org/depts/pw/sust>

